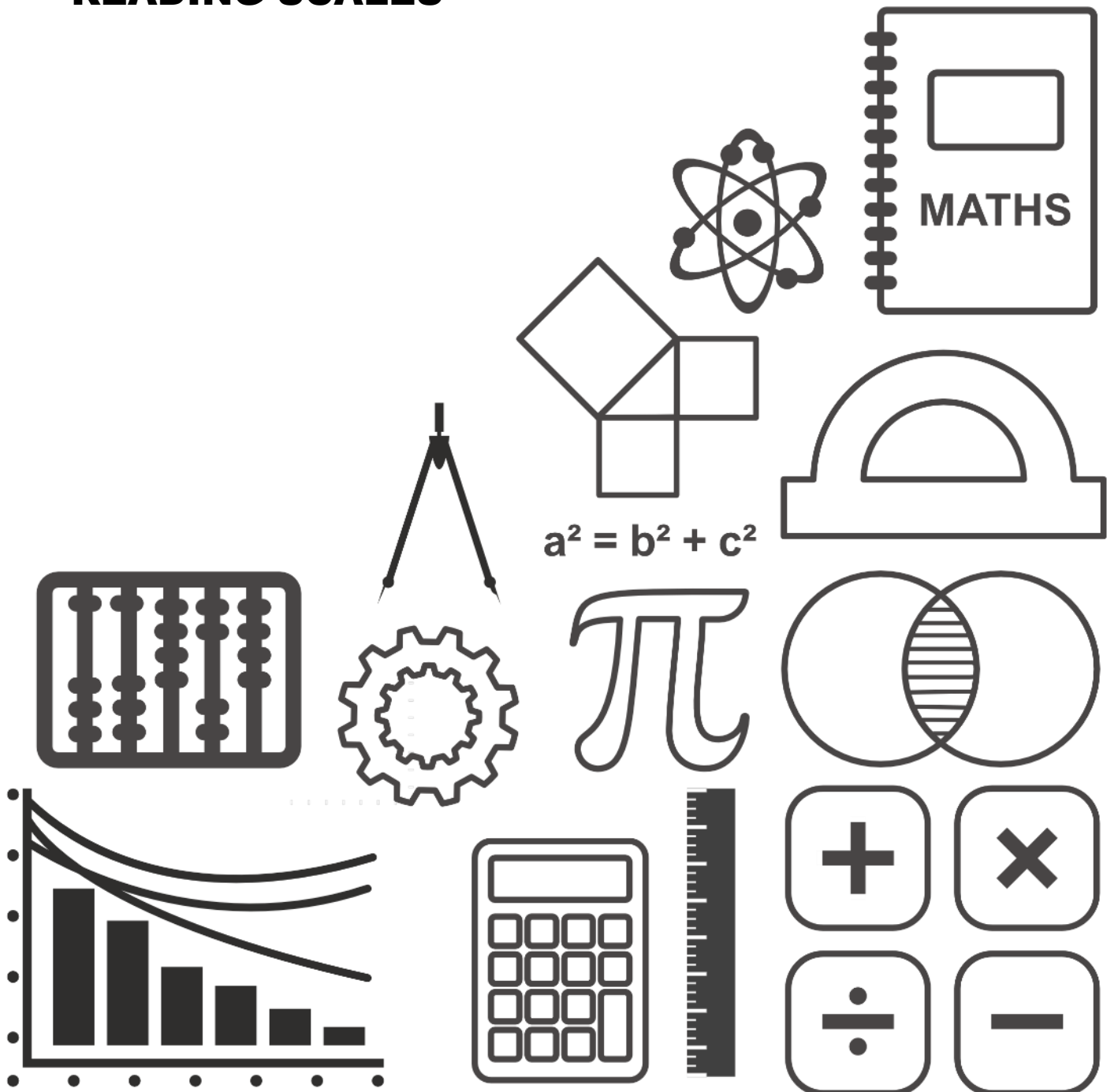


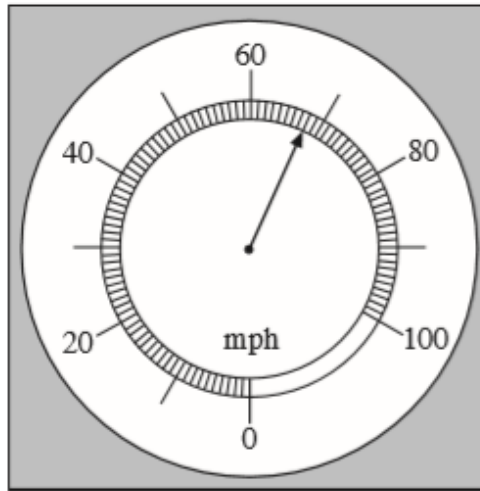
MATHS DIY

GCSE TOPIC BOOKLET READING SCALES



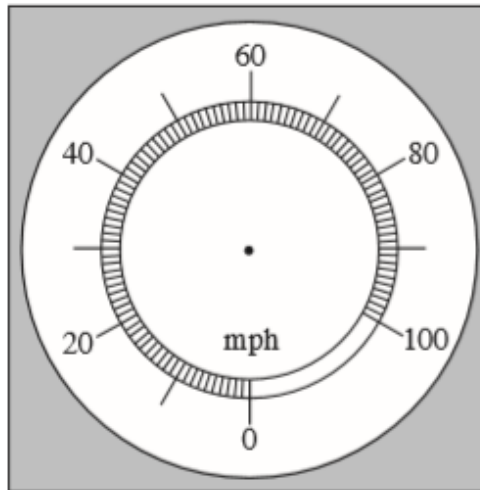
1. (a) The diagrams show a car speedometer.

(i) What speed is shown on the following diagram?



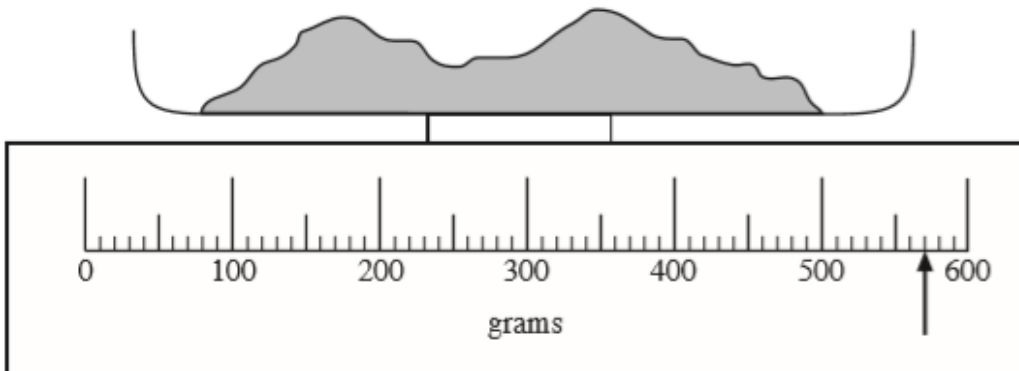
speed = m.p.h.

(ii) Draw a pointer on the following diagram showing a speed of 56 m.p.h.



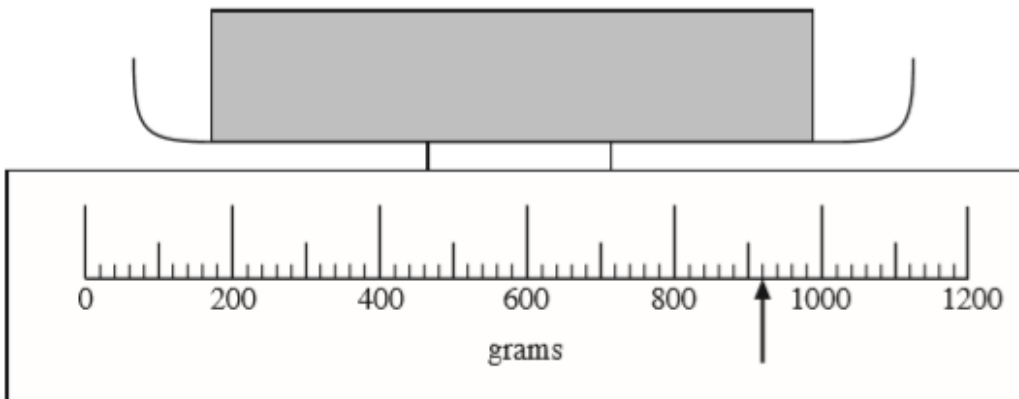
[2]

- (b) (i) A kitchen scales is used to weigh one of the ingredients for a cake.
 What weight is shown on the scales?



Weight = grams

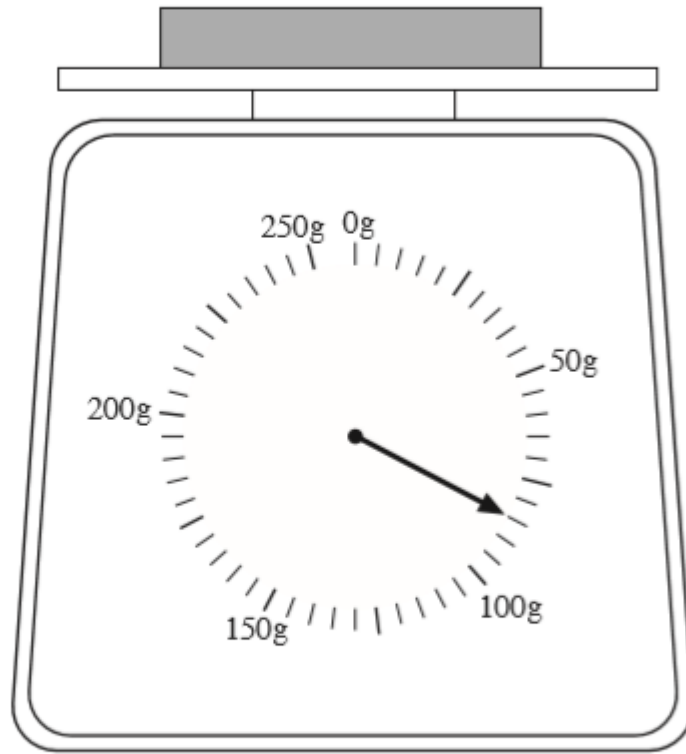
- (ii) Another kitchen scales is used to weigh another ingredient.
 What weight is shown on these scales?



Weight = grams

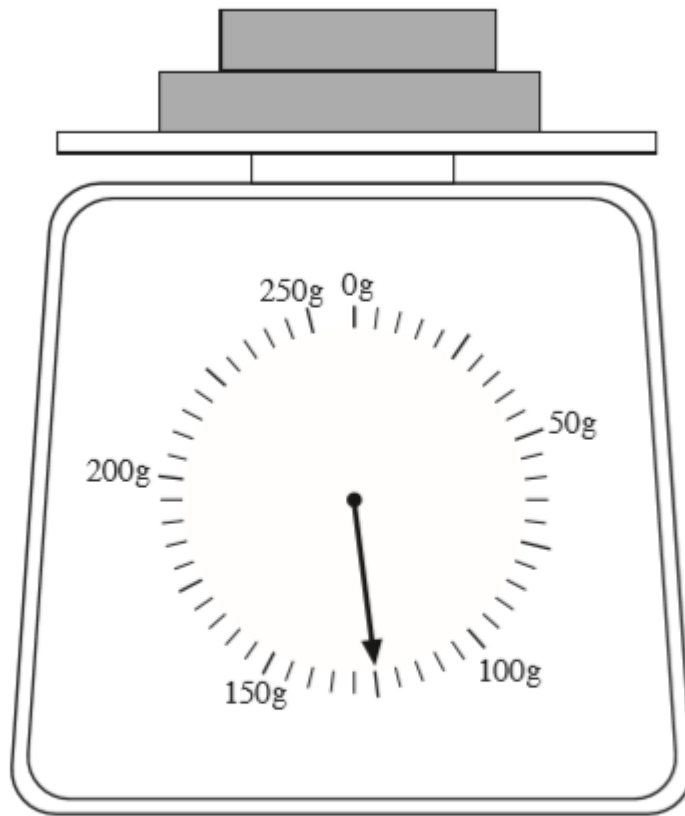
[2]

2. (i) What weight is shown on the following diagram?



.....

(ii) An extra block is put on the scale. What is the weight of this extra block?



.....

.....

.....

[3]

3. The diagram shows a scale with 10 and 70 marked on it. Find the values that should be shown on the scale at the points marked *A*, *B*, *C* and *D*.



A =

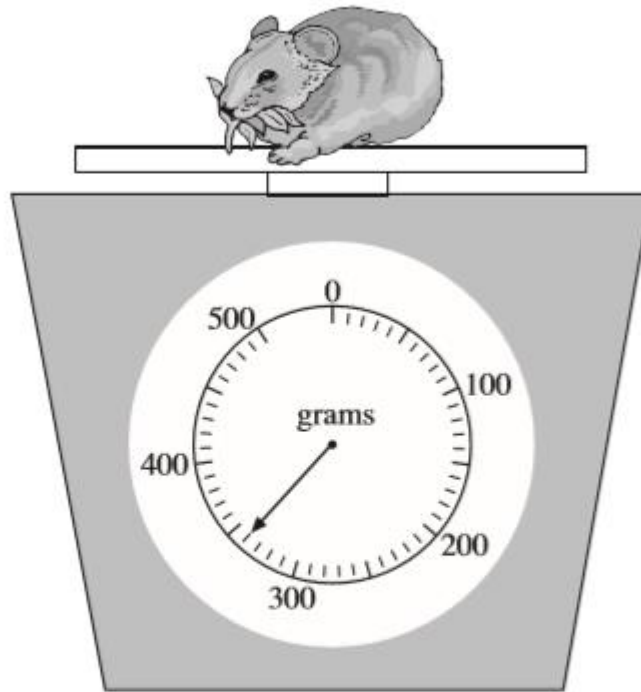
B =

C =

D =

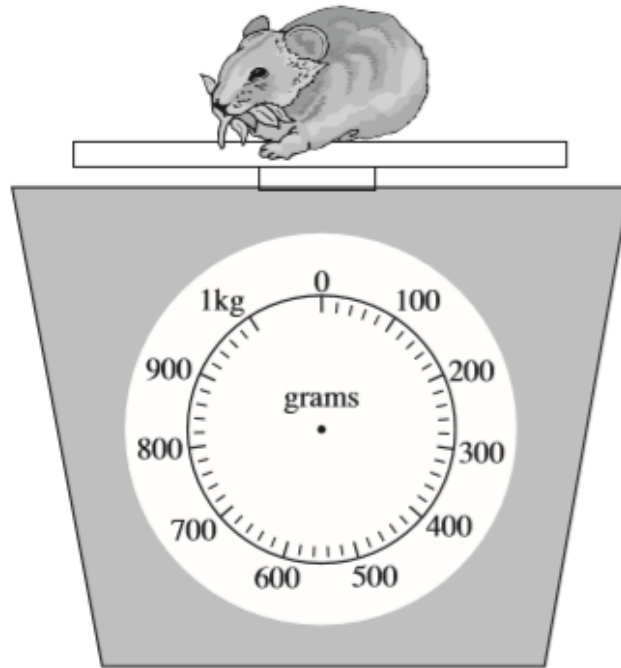
[4]

4. (a) (i) How much does Molly's pet hamster weigh?



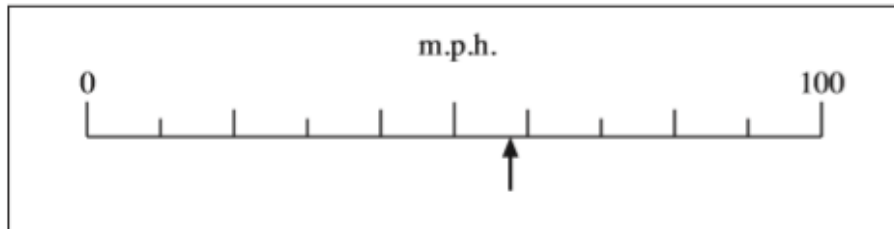
Molly's pet hamster weighs g.

- (ii) She puts her hamster on a different scale.
Draw the pointer to show the hamster's weight.



[2]

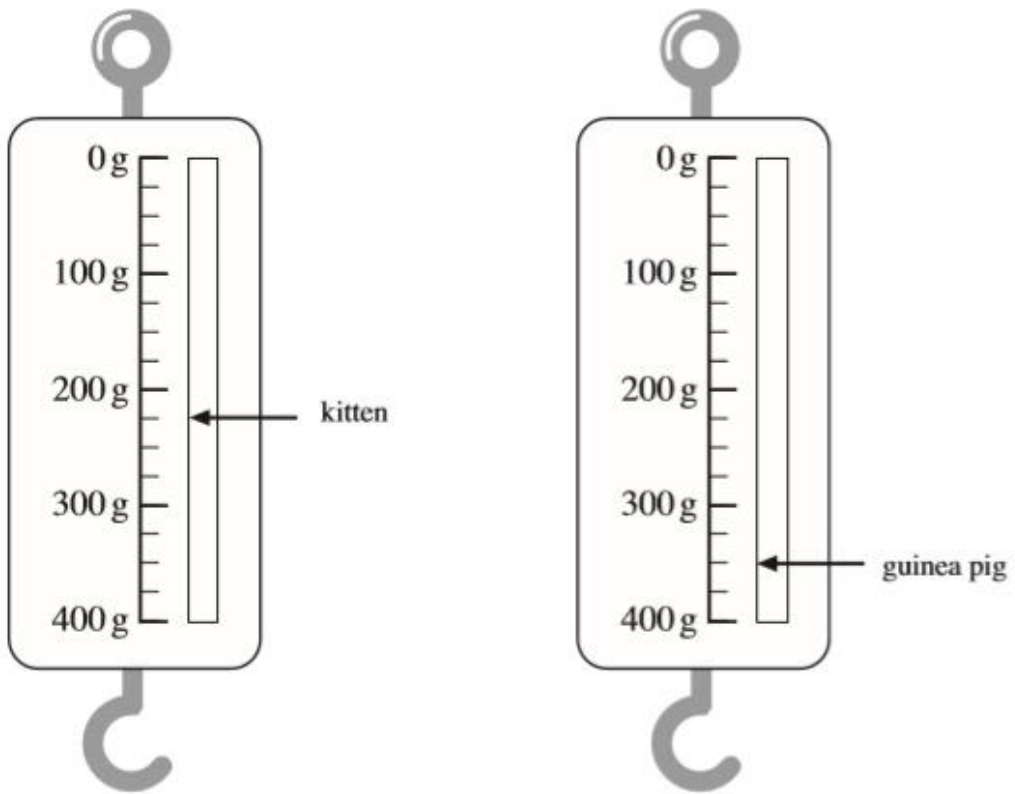
- (b) Molly goes out in her car.
What speed is she doing, correct to the nearest 10 miles per hour?



..... m.p.h.

[1]

5. Megan weighs her guinea pig and her kitten using a spring balance.



(i) Write down the weight of her kitten.

.....

(ii) How much heavier is the guinea pig than the kitten?

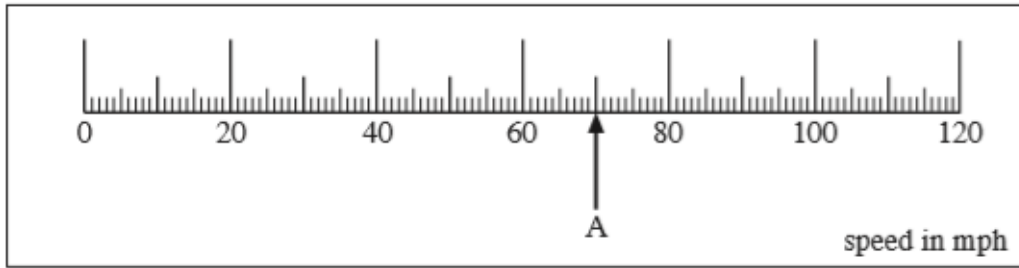
.....

.....

.....

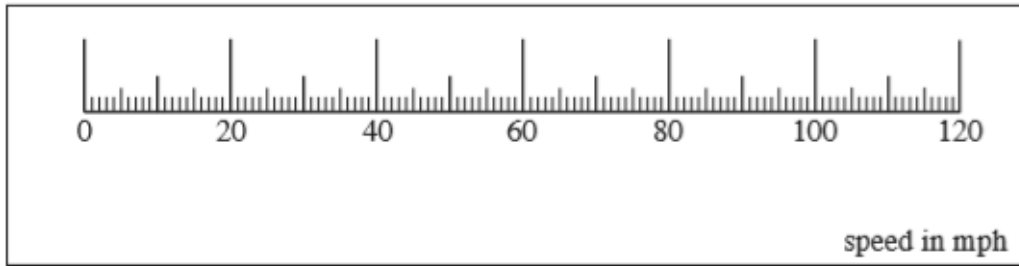
[3]

6. (a) The following scale gives the speed of a car in m.p.h.
- (i) What speed is shown by the arrow A?



.....

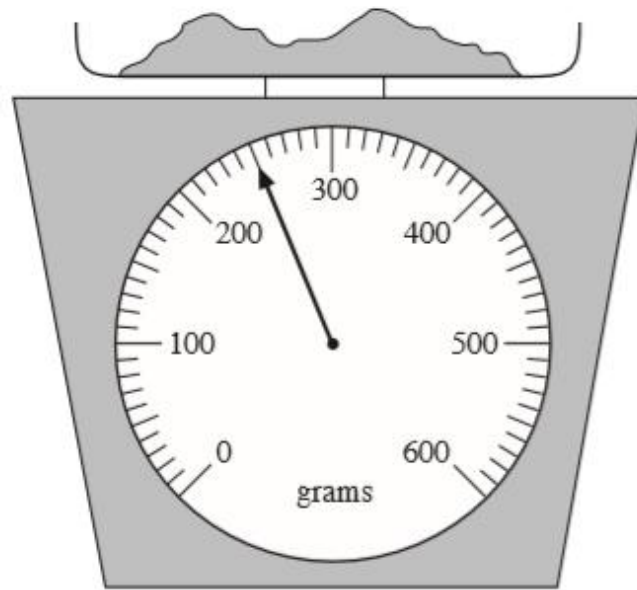
- (ii) Draw an arrow to show a speed of 55 m.p.h.



[2]

(b) A kitchen scale is used to weigh flour.

(i)



Write down the weight of the flour on the scale.

..... g

(ii) More flour is added until the weight of the flour is as shown on the scale below. How much more flour has been added?

.....

[3]

